

**APPENDIX L3**  
**KINGS COUNTY LIBRARY**



UltraSystems

environmental • management • planning

---

June 14, 2019

**Kings County Library**

401 N. Douty Street

Hanford, CA 93230

[askus@kingscountylibrary.org](mailto:askus@kingscountylibrary.org)

**RE: Information Request Letter for the KART Transit Station Project**

To Whom it May Concern:

UltraSystems has been hired by the Kings County Area Public Transit Agency (KCAPTA) to conduct environmental analysis for the proposed KART Transit Project (Project). UltraSystems is currently in the process of preparing environmental analysis for the proposed project, including its potential impacts on public services. UltraSystems needs your department's input on potential environmental impacts.

This letter is to request information from the Kings County Library regarding the proposed project.

The proposed project is located east of Harris Street, west of Brown Street, north of East 7th Street, and south of the alley located between 9th Street and 8th Street in the City of Hanford. The approximately 4-acre project site has been previously developed, and is located in the Downtown Mixed-Use Zoning District.

The KART Transit Project would include construction of a transit station and commercial development. The proposed project would include a large central passenger waiting area, employee break room, training room on the first floor, and leasable office space on the second and third floor. On-site bus parking and off-site parking would also be constructed. See attached **Project Location Map** and **Station Layout Map**.

**It would be much appreciated if you would please answer the questions below via email no later than Monday June 24, 2019.**

Please send your answers to me at: [mpartridge@ultrasystems.com](mailto:mpartridge@ultrasystems.com). If you have any questions I can be reached via email or by phone at: 949-788-4900, extension 222.

1. Please provide a list of the libraries which would serve the project site.
2. Do you anticipate any potential environmental impacts from the proposed project related to public library facilities?
3. If the proposed project has the potential to impact public library facilities, what mitigation, if any, do you recommend to reduce potential impacts?
4. Are there any other issues you see with the proposed project related to public library facilities? If so, please describe.

---

**Corporate Office – Orange County**

16431 Scientific Way

Irvine, CA 92618-4355

Telephone: 949.788.4900

Facsimile: 949.788.4901

Website: [www.ultrasystems.com](http://www.ultrasystems.com)



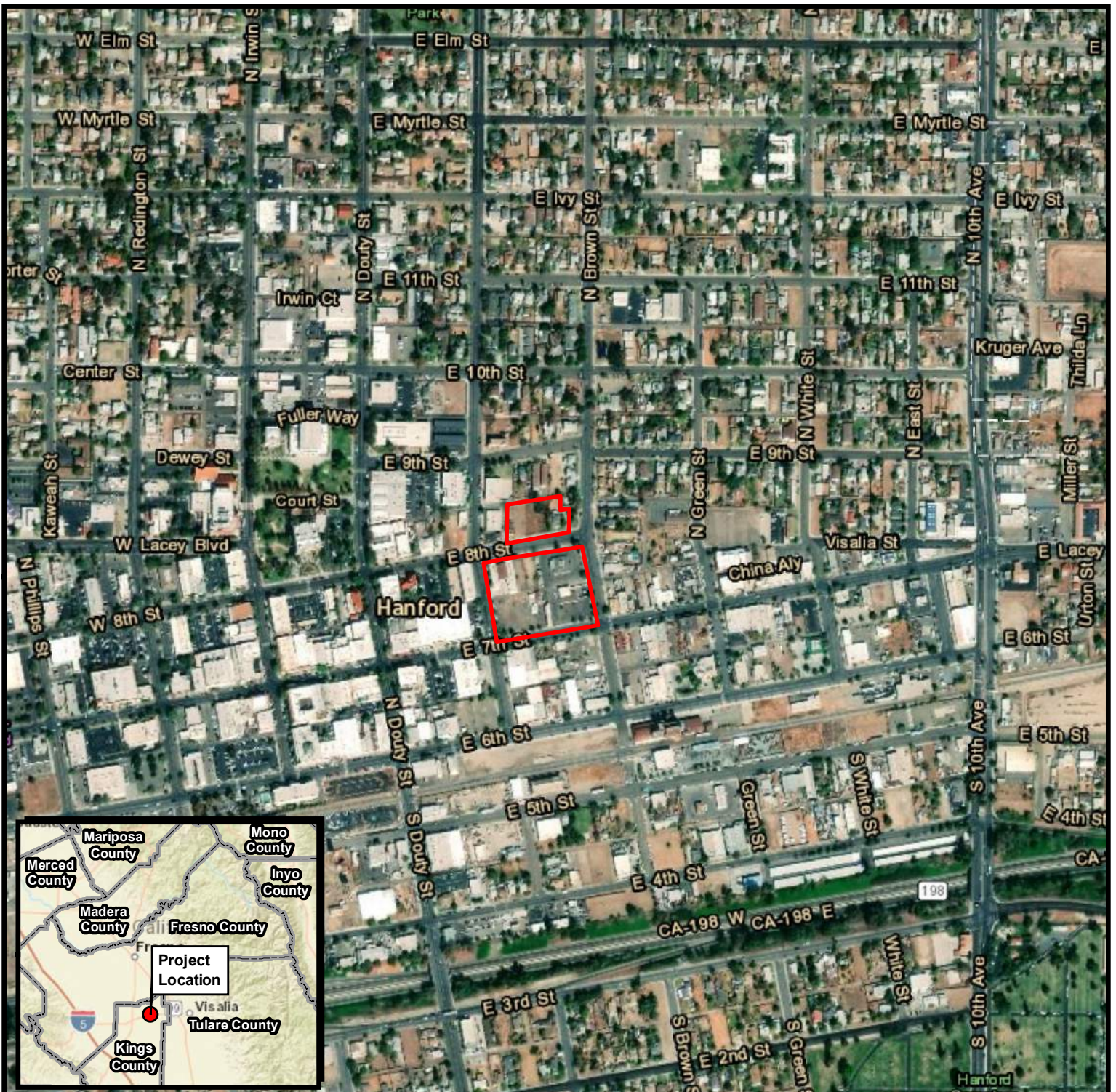
UltraSystems  
environmental•management•planning

---

Best Regards,

Margaret Partridge, AICP, LEED Green Associate, ENV SP  
Senior Project Manager  
UltraSystems  
16431 Scientific Way  
Irvine, CA 92618  
949-788-4900, extension 222  
mpartridge@ultrasystems.com

Attachments: Project Location Map and Station Layout Map

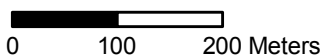
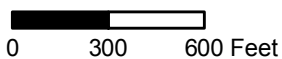


Disclaimer: Representations on this map or illustration are intended only to indicate locations of project parameters reported in the legend. Project parameter information supplied by others (see layer credits) may not have been independently verified for accuracy by UltraSystems Environmental, Inc. This map or illustration should not be used for, and does not replace, final grading plans or other documents that should be professionally certified for development purposes.

Path: J:\Projects\7014\_Kings\_County\_Kart\MXD\7014\_Kings\_County\_Kart\_Project\_Location\_2019\_05\_14.mxd  
 Service Layer Credits: Esri, HERE, Garmin, © OpenStreetMap contributors, Sources: Esri, HERE, Garmin, USGS, Intermap, INCREMENT P, NRCan, Esri Japan, METI, Esri China (Hong Kong), Esri Korea, Esri (Thailand), NGCC, © OpenStreetMap contributors, and the GIS User Community, Esri, HERE, Garmin, © OpenStreetMap contributors, and the GIS user community, Source: Esri, DigitalGlobe, GeoEye, Earthstar Geographics, CNES/Airbus DS, USDA, USGS, AeroGRID, IGN, and the GIS User Community, Kings County Jan. 2018; UltraSystems Environmental, Inc., 2019

Date

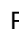
Scale 1:7,200



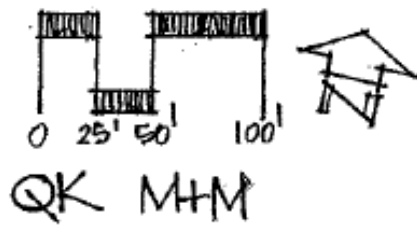
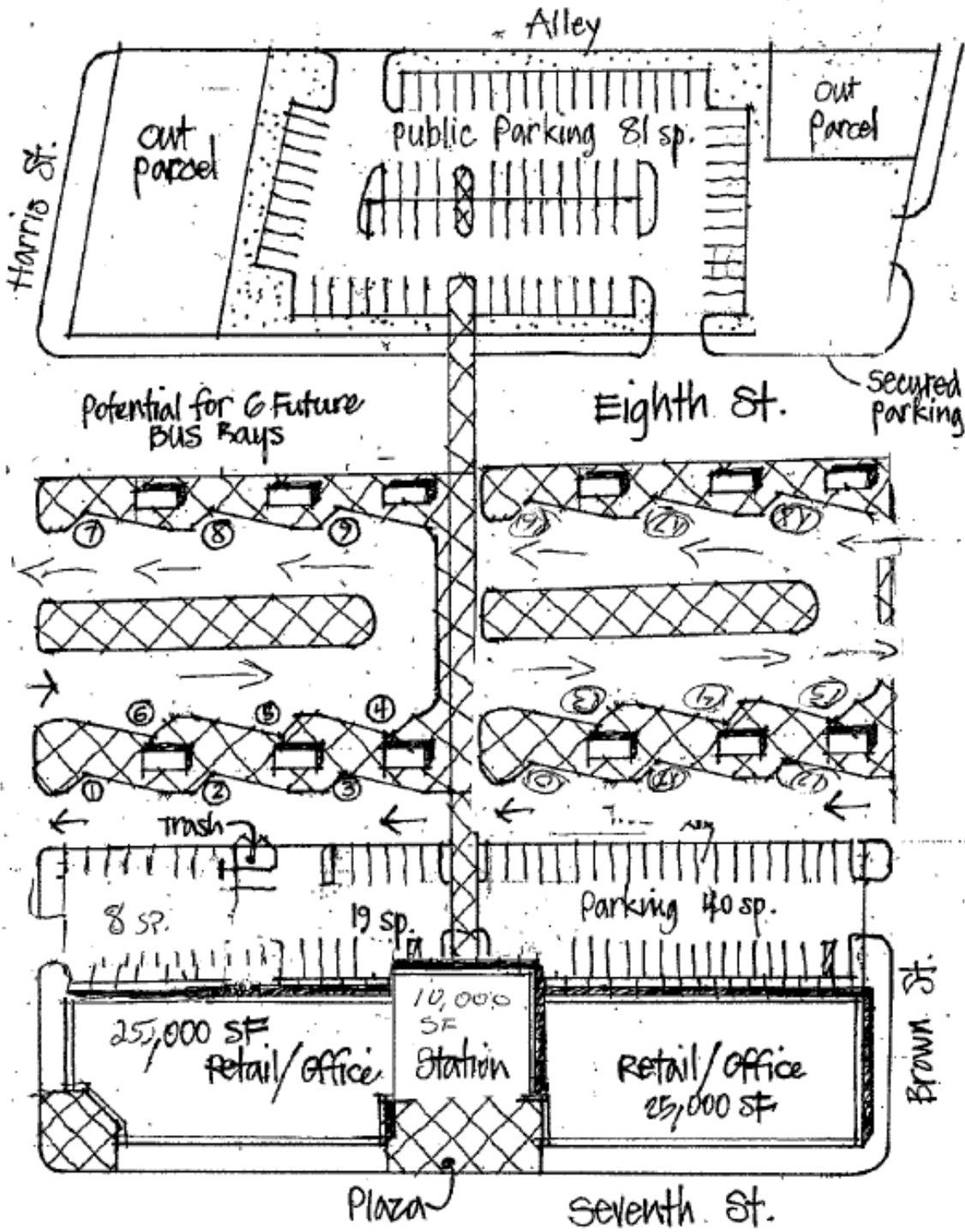
**Legend**

 Project Boundary

**KART Transit Station**

 Project Location





CONCEPT STUDY C-1  
 New KART Station Facility  
 Hanford, CA  
 7-26-18

Disclaimer: Illustration provided by Kings County Area Public Transit Agency, who has indicated that the information is true and correct. No other warranties are expressed or implied.

Sources: Kings County Area Public Transit Agency, July 26, 2018

**From:** Rencher, Natalie <Natalie.Rencher@kingscountylibrary.org>  
**Sent:** Wednesday, July 10, 2019 10:38 AM  
**To:** mpartridge@ultrasystems.com  
**Subject:** Info Request Letter for the KART Transit Station Project- Response Needed Please

Good Morning Margaret,

This email is to acknowledge receipt of your request. You will receive a response from the Library by Friday, July 12, 2019. Our delay was not intended to cause any inconvenience. If you need to contact the Library in the future feel free to call me. My contact info is below.

Kind Regards,

***Natalie R. Rencher, MLS***

Library Director

Kings County Library

[401 North Douty Street](#)

[Hanford, CA 93230](#)


[559-852-4015](#)

[natalie.rencher@kingscountylibrary.org](mailto:natalie.rencher@kingscountylibrary.org)



Visit our Website 

Like us on 

Follow us on 

Sent from my iPad Air 2

**I will lift my eyes unto the hills,  
from whence cometh my help. ~Psalm 121**

**From:** Rencher, Natalie <Natalie.Rencher@kingscountylibrary.org>  
**Sent:** Thursday, July 11, 2019 3:52 PM  
**To:** Margaret Partridge <mpartridge@ultrasystems.com>  
**Subject:** RE: Info Request Letter for the KART Transit Station Project- Response Needed Please

Good Afternoon Margaret,

Attached are the responses from the public library. Please let me know if the library can assist further.

Best,

***Natalie R. Rencher, MLS***

Library Director  
Kings County Library  
401 North Douty Street  
Hanford, CA 93230  
559-852-4015  
[natalie.rencher@kingscountylibrary.org](mailto:natalie.rencher@kingscountylibrary.org)



Visit our Website 

Like us on 

Follow us on 

**APPENDIX L3**  
**KINGS COUNTY LIBRARY**





---

DATE: July 11, 2019  
TO: Margaret Partridge, AICP, LEED Green Associate, ENV SP | Senior Project Manager  
FROM: Natalie R. Rencher, Library Director  
SUBJECT: Info Request Letter for the KART Transit Station Project

---

Greetings Margaret,

Below are the answers to your questions.

1. Please provide a list of the libraries which would serve the project site.
  - a. Kings County Library
    - i. Hanford Branch, 401 North Douty Street, Hanford, Ca 93230
2. Do you anticipate any potential environmental impacts from the proposed project related to public library facilities?

Increased population using the transit station can impact the public library positively and/or negatively. A positive impact example would be tourists/schools/people coming into the area and will use the library as it is intended. A negative impact example is if certain populations congregate at the transit station and make their way over to the library. The negative impact is not really a problem per se until certain behaviors not suitable for library use happens. The increase of baggage/bedding/carts that come with some individuals then they begin to leave them around the library building which becomes a hindrance to those using the public library as it is intended to be used.

Parking...Our parking lot has absorbed many uses over the years for functions beyond library parking. Not really bad yet but could become a problem in the future.

3. If the proposed project has the potential to impact public library facilities, what mitigation, if any, do you recommend to reduce potential impacts?

Have clean public restrooms and water fountains available for the public!!

4. Are there any other issues you see with the proposed project related to public library facilities? If so, please describe.

Increase use of library's public restrooms use!!! We are the County's Cool/Warm zones and were open three nights and on Saturday's. We are the only facility that is free and open to everyone that walks through the doors of the library. Increased activity in the community means increased activity for the public library.