

**ATTACHMENT C**

**QUIRING LLC, CONTRACT CHANGE ORDER #002**



CM Construction Services, Inc.  
 PO Box 6237  
 Visalia, California 93290  
 Phone: +15597359556

Project: 23010 - HANF - KART Reginal Transit Facility

**Prime Contract Change Order #002: CE #005 - ASI 01 Conforming Se**

<b>TO:</b>	Kings County Area Public Transit Agency (KCAPTA) 610 W 7th Street Hanford, California 93230	<b>FROM:</b>	Quiring General LLC 5118 E Clinton Way, Ste. 201 Fresno, California 93727
<b>DATE CREATED:</b>	2/09/2024	<b>CREATED BY:</b>	Chris Hale (CM Construction Services, Inc.)
<b>CONTRACT STATUS:</b>	Approved	<b>REVISION:</b>	0
<b>DESIGNATED REVIEWER:</b>		<b>REVIEWED BY:</b>	
<b>DUE DATE:</b>		<b>REVIEW DATE:</b>	02/09/2024
<b>INVOICED DATE:</b>		<b>PAID DATE:</b>	
<b>SCHEDULE IMPACT:</b>	0 days	<b>EXECUTED:</b>	No
<b>REVISED SUBSTANTIAL COMPLETION DATE:</b>		<b>SIGNED CHANGE ORDER RECEIVED DATE:</b>	
<b>CONTRACT FOR:</b>	1:Transit Center	<b>TOTAL AMOUNT:</b>	\$214,250.71

**DESCRIPTION:**

CE #005 - ASI 01 Conforming Set of Plans

ASI 01 was issued after the bid documents and made changes they aligned was was approved to be built. The major impact of the changes were to the demolition, wet utilities and signage.

**ATTACHMENTS:**

[RE\\_KART-ASI-001 Conforming Set.msg](#), [PCO 2.pdf](#)

**POTENTIAL CHANGE ORDERS IN THIS CHANGE ORDER:**

PCO #	Title	Schedule Impact	Amount
003	CE #005 - ASI 01 Conforming Se	0 days	\$214,250.71
<b>Total:</b>			<b>\$214,250.71</b>

**CHANGE ORDER LINE ITEMS:**

**PCO # 003: CE #005 - ASI 01 Conforming Se**

#	Budget Code	Description	Amount
1		ASI 01 Conforming Set Changes	\$214,250.71
<b>Grand Total:</b>			<b>\$214,250.71</b>

The original (Contract Sum)	\$29,205,000.00
Net change by previously authorized Change Orders	\$0.00
The contract sum prior to this Change Order was	\$29,205,000.00
The contract sum will be increased by this Change Order in the amount of	\$214,250.71
The new contract sum including this Change Order will be	\$29,419,250.71
The contract time will not be changed by this Change Order.	



**PCCO #002**

**Charles Dillinger (RRM Design Group)**

3765 S. Higuera St.  
San Luis Obispo, California 93401

**Kings County Area Public Transit Agency  
(KCAPTA)**

610 W 7th Street  
Hanford, California 93230

**Quiring General LLC**

5118 E Clinton Way, Ste. 201  
Fresno, California 93727

\_\_\_\_\_  
SIGNATURE DATE

\_\_\_\_\_  
SIGNATURE DATE

\_\_\_\_\_  
SIGNATURE DATE





# Change Order Request

QUIRING GENERAL, LLC  
 5118 E CLINTON WAY, SUITE 201  
 FRESNO, CA 93727  
 Phone: (559) 432-2800

**Owner :** KINGS COUNTY AREA PUBLIC TRANSIT AGENI  
 610 W. 7th Street  
 Hanford, CA 93230

**Project:** 23026- / KART Transit Facility  
 200 East 7th Street  
 Hanford, CA 93230

**PCOType:** EXTERNAL

**Change Order Request # :** 2      **ASI 01 Conforming Set Changes**

**Item :** 1      **ASI 01 Conforming Set Changes - Demo**

Phase	Description	Cost Type	Estimated Cost
022200.00	SITE DEMOLITION	4 SUB	16,512.50
<i>ASI 01 Changes - Refer to HD Matthews proposal dated 2/2/24</i>			
<b>Subtotal Item</b>		<b>1</b>	<b>16,512.50</b>

Cost Type Recap:	Mark up	Amount
4 SUBCONTRACT	0.00%	16,512.50
<b>Subtotal Item</b>		<b>16,512.50</b>
BOND	1.00%	165.13
INSURANCE -GL	1.20%	200.13
INSURANCE -BR	1.20%	202.53
FEE	7.67%	1,310.00
<b>Requested Total For Item</b>		<b>18,390.29</b>

**Item :** 2      **ASI 01 Conforming Set Changes - Wet Utilities**

Phase	Description	Cost Type	Estimated Cost
026000.00	WET UTILITIES	4 SUB	173,594.59
<i>ASI 01 Changes - Refer to Holloway proposal dated 2/2/24</i>			
<b>Subtotal Item</b>		<b>2</b>	<b>173,594.59</b>

Cost Type Recap:	Mark up	Amount
4 SUBCONTRACT	0.00%	173,594.59
<b>Subtotal Item</b>		<b>173,594.59</b>
BOND	1.00%	1,735.95
INSURANCE -GL	1.20%	2,103.97
INSURANCE -BR	1.20%	2,129.21
FEE	8.35%	14,995.18
<b>Requested Total For Item</b>		<b>194,558.90</b>





## Fee Calculator

<b>Project Manager</b>		Joe Bogart	PCO #	Date: 2/7/2024	
<b>Project Name</b>		KART Transit Center	Project Number	002	23026
Trade Item				Trade Direct Cost	QG Markup
Matthews - Demo Revisions				\$ 14,100.00	\$ 1,310.00
Holloway - Utility Revisions				\$ 150,951.82	\$ 14,995.18
Signage - Signage Reinstallation				\$ 1,050.00	\$ 52.50
<b>QG Markup Subtotal</b>					<b>\$ 16,357.68</b>

**HD Mathews Demolition & Excavation**

PO Box 12483  
 Fresno Ca 93778  
 Office (559) 275-Demo (3366)  
 CSLB Lic. #: 843549  
 Proposal by: Pablo Guerrero 559-999-3380

DIR: 3066



Project Name: KART Demolition Scope ASI 1  
 Project Location: 200 E 7th Street Hanford  
 Proposal per demo sheets C2.00 and C2.10 dated 1/22/24  
 Addendums \_\_\_ acknowledged

Date: 2/2/2024  
 Client: Quiring General  
 Contact: Jacob Project Engineer  
 Joe Project Manager  
 Jordan Superintendent

Item	Site Demolition	Approx	Price	Lump Sum
1	Mobilization	3	Ea	\$0.00
2	Remove additional trees including rootballs	1	LS	\$0.00
3	Salvage signs	1	LS	\$0.00
4	Demo & remove additional concrete flatwork and a/c per new layouts	1	LS	\$0.00
5	Demo & remove inlets and drains	1	LS	\$0.00
6	Haul off & disposal for our scope of work is included	1	LS	\$0.00
<b>Total Bid</b>				<b>\$16,512.50</b>

Special Provisions

- Clear layouts by others
- All work to occur during normal business hours
- No demolition work for other sub trades is included
- Fire hydrant relocation not included
- Storm Drain removal not included

Standard Exclusions

- |   |   |
|---|---|
| 1 Permits/ Notifications                | 9 Removal, remediation, and hauling of any hazardous waste or soils                       |
| 2 Damage to unforeseen utilities        | 10 Multiple Mobilizations- 1 per Bid (Additional mobilizations: \$1,500.00 per extra mob) |
| 3 Pedestrian Safety                     | 11 Change Orders without prior Execution  |
| 4 Disposal of other contractor debris   | 12 Electrical, gas, telephone disconnects or coordination with utility agencies           |
| 5 Haul off of any spoils generated      | 13 Shoring or Bracing   |
| 6 Import of material                    | 14 <del>Prevailing wages</del>  |
| 7 Temporary Fencing                     | 15 Standby time due to others   |
| 8 Dust Control for other work than ours | 16 Layouts  |
|   | 17 Grubbing   |

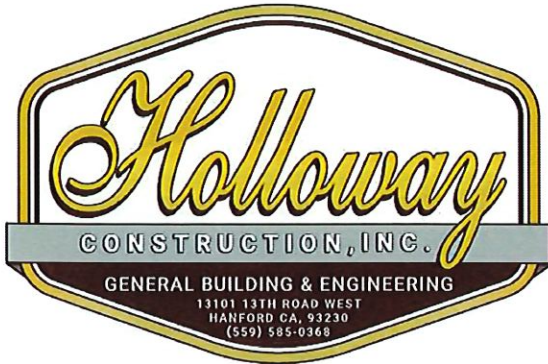
Accepted \_\_\_\_\_, 2024  
 By: \_\_\_\_\_  
 Title: \_\_\_\_\_  
 Price is good for 30 days from bid date

HD Mathews Demolition  
 Approved:  
 By: Pablo Guerrero

\*\*\* By signing proposal above, this signed document is to become a binding contract for all legal purposes and insurance reqs.  
 \*\*\* Should a separate contract be issued, this proposal & exclusions are to be added and reflected accordingly



# Request for Change



RFC Number: 2  
Date: 02/02/2024

**Regarding:**

ASI #1 - Added Approx. (226') 12" Storm and (5) Curb Inlets and the Removal of Approx. (126') of Existing Storm Pipe and (5) Existing Curb Inlets.

To:  
Quiring

**Job Site:**  
KART-Kings Area Rural Transit  
5118 E Clinton Way  
Suite 201  
Fresno, CA 93727

Requested By:	Phone:	E-mail:
Kris Bolts	(559) 585-0368	pm@hollowayconstructioninc.net

Recipients:	Phone:	E-mail:
JoeBogart	(559) 301-9239	jbogart@quiring.com

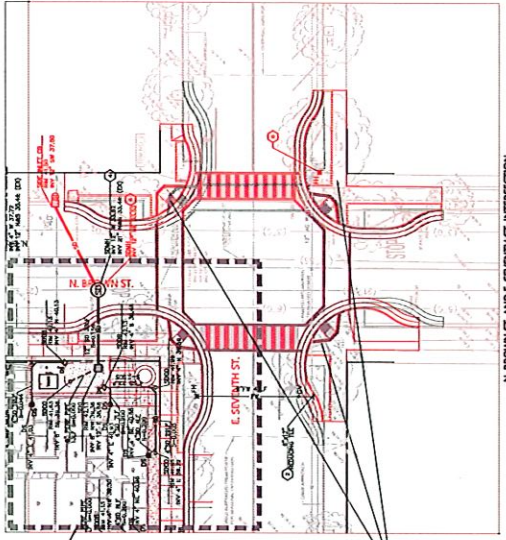
Requested Change:	Change to Contract
Labor (Additional 17 Days)	\$ 54554.36
Equipment (HCI Owned Equipment)	\$ 13942.00
Materials (5) Curb Inlets (Additional Pipe & Fittings)	\$ 43355.46
Subcontractors (Traffic Control One Lane Closures & Two Flaggers \$1800.00 Per Day)	\$ 30600.00
Subcontractors (Sawcutting)	\$ 8500.00
Overhead & Profit 15%	\$ 22642.77

Please respond by: 02/09/2024

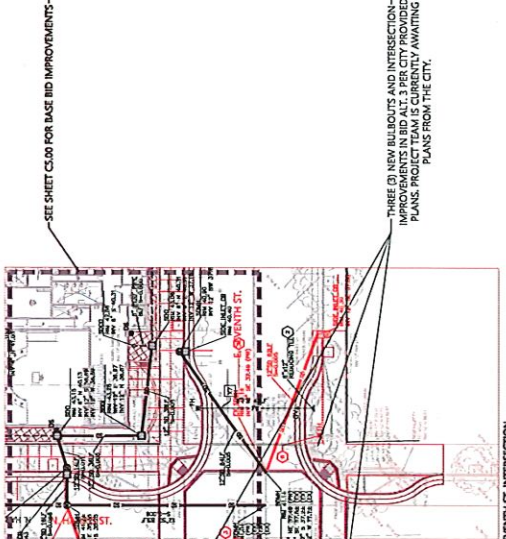
RFC Total	\$ 173594.59
-----------	--------------

Kris Bolts  
Holloway Construction, Inc

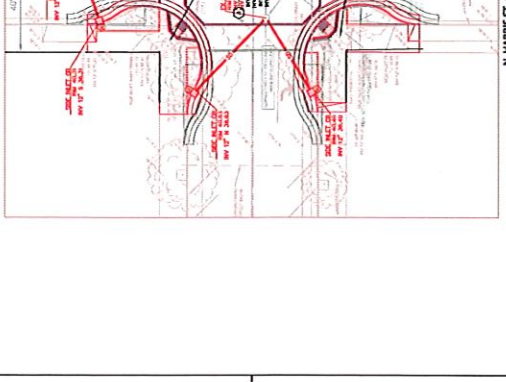
Joe Bogart  
Quiring



N. BROWN ST. AND E. SEVENTH ST. INTERSECTION  
 ADD ALTERNATE 3



N. HARRIS ST. AND E. SEVENTH ST. INTERSECTION  
 ADD ALTERNATE 3



N. BROWN ST. AND E. SEVENTH ST. INTERSECTION  
 ADD ALTERNATE 3

SEE SHEET C100 FOR BAGE BID IMPROVEMENTS

THREE (3) NEW BULBOUTS AND INTERSECTION IMPROVEMENTS IN BID #12 PER CITY PROVIDED PLANS PROVIDED FOR THE BIDDING PERMITTING PLANS FROM THE CITY.

### LEGEND

- PROPERTY LINE
- EXISTING UTILITY LOCATIONS (SEE PLAN SHEET 23664-01-C119)
- EXISTING UTILITY LOCATIONS (SEE PLAN SHEET 23664-01-C120)
- EXISTING UTILITY LOCATIONS (SEE PLAN SHEET 23664-01-C121)
- EXISTING UTILITY LOCATIONS (SEE PLAN SHEET 23664-01-C122)
- EXISTING UTILITY LOCATIONS (SEE PLAN SHEET 23664-01-C123)
- EXISTING UTILITY LOCATIONS (SEE PLAN SHEET 23664-01-C124)
- EXISTING UTILITY LOCATIONS (SEE PLAN SHEET 23664-01-C125)
- EXISTING UTILITY LOCATIONS (SEE PLAN SHEET 23664-01-C126)
- EXISTING UTILITY LOCATIONS (SEE PLAN SHEET 23664-01-C127)
- EXISTING UTILITY LOCATIONS (SEE PLAN SHEET 23664-01-C128)
- EXISTING UTILITY LOCATIONS (SEE PLAN SHEET 23664-01-C129)
- EXISTING UTILITY LOCATIONS (SEE PLAN SHEET 23664-01-C130)
- EXISTING UTILITY LOCATIONS (SEE PLAN SHEET 23664-01-C131)
- EXISTING UTILITY LOCATIONS (SEE PLAN SHEET 23664-01-C132)
- EXISTING UTILITY LOCATIONS (SEE PLAN SHEET 23664-01-C133)
- EXISTING UTILITY LOCATIONS (SEE PLAN SHEET 23664-01-C134)
- EXISTING UTILITY LOCATIONS (SEE PLAN SHEET 23664-01-C135)
- EXISTING UTILITY LOCATIONS (SEE PLAN SHEET 23664-01-C136)
- EXISTING UTILITY LOCATIONS (SEE PLAN SHEET 23664-01-C137)
- EXISTING UTILITY LOCATIONS (SEE PLAN SHEET 23664-01-C138)
- EXISTING UTILITY LOCATIONS (SEE PLAN SHEET 23664-01-C139)
- EXISTING UTILITY LOCATIONS (SEE PLAN SHEET 23664-01-C140)
- EXISTING UTILITY LOCATIONS (SEE PLAN SHEET 23664-01-C141)
- EXISTING UTILITY LOCATIONS (SEE PLAN SHEET 23664-01-C142)
- EXISTING UTILITY LOCATIONS (SEE PLAN SHEET 23664-01-C143)
- EXISTING UTILITY LOCATIONS (SEE PLAN SHEET 23664-01-C144)
- EXISTING UTILITY LOCATIONS (SEE PLAN SHEET 23664-01-C145)
- EXISTING UTILITY LOCATIONS (SEE PLAN SHEET 23664-01-C146)
- EXISTING UTILITY LOCATIONS (SEE PLAN SHEET 23664-01-C147)
- EXISTING UTILITY LOCATIONS (SEE PLAN SHEET 23664-01-C148)
- EXISTING UTILITY LOCATIONS (SEE PLAN SHEET 23664-01-C149)
- EXISTING UTILITY LOCATIONS (SEE PLAN SHEET 23664-01-C150)
- EXISTING UTILITY LOCATIONS (SEE PLAN SHEET 23664-01-C151)
- EXISTING UTILITY LOCATIONS (SEE PLAN SHEET 23664-01-C152)
- EXISTING UTILITY LOCATIONS (SEE PLAN SHEET 23664-01-C153)
- EXISTING UTILITY LOCATIONS (SEE PLAN SHEET 23664-01-C154)
- EXISTING UTILITY LOCATIONS (SEE PLAN SHEET 23664-01-C155)
- EXISTING UTILITY LOCATIONS (SEE PLAN SHEET 23664-01-C156)
- EXISTING UTILITY LOCATIONS (SEE PLAN SHEET 23664-01-C157)
- EXISTING UTILITY LOCATIONS (SEE PLAN SHEET 23664-01-C158)
- EXISTING UTILITY LOCATIONS (SEE PLAN SHEET 23664-01-C159)
- EXISTING UTILITY LOCATIONS (SEE PLAN SHEET 23664-01-C160)
- EXISTING UTILITY LOCATIONS (SEE PLAN SHEET 23664-01-C161)
- EXISTING UTILITY LOCATIONS (SEE PLAN SHEET 23664-01-C162)
- EXISTING UTILITY LOCATIONS (SEE PLAN SHEET 23664-01-C163)
- EXISTING UTILITY LOCATIONS (SEE PLAN SHEET 23664-01-C164)
- EXISTING UTILITY LOCATIONS (SEE PLAN SHEET 23664-01-C165)
- EXISTING UTILITY LOCATIONS (SEE PLAN SHEET 23664-01-C166)
- EXISTING UTILITY LOCATIONS (SEE PLAN SHEET 23664-01-C167)
- EXISTING UTILITY LOCATIONS (SEE PLAN SHEET 23664-01-C168)
- EXISTING UTILITY LOCATIONS (SEE PLAN SHEET 23664-01-C169)
- EXISTING UTILITY LOCATIONS (SEE PLAN SHEET 23664-01-C170)
- EXISTING UTILITY LOCATIONS (SEE PLAN SHEET 23664-01-C171)
- EXISTING UTILITY LOCATIONS (SEE PLAN SHEET 23664-01-C172)
- EXISTING UTILITY LOCATIONS (SEE PLAN SHEET 23664-01-C173)
- EXISTING UTILITY LOCATIONS (SEE PLAN SHEET 23664-01-C174)
- EXISTING UTILITY LOCATIONS (SEE PLAN SHEET 23664-01-C175)
- EXISTING UTILITY LOCATIONS (SEE PLAN SHEET 23664-01-C176)
- EXISTING UTILITY LOCATIONS (SEE PLAN SHEET 23664-01-C177)
- EXISTING UTILITY LOCATIONS (SEE PLAN SHEET 23664-01-C178)
- EXISTING UTILITY LOCATIONS (SEE PLAN SHEET 23664-01-C179)
- EXISTING UTILITY LOCATIONS (SEE PLAN SHEET 23664-01-C180)
- EXISTING UTILITY LOCATIONS (SEE PLAN SHEET 23664-01-C181)
- EXISTING UTILITY LOCATIONS (SEE PLAN SHEET 23664-01-C182)
- EXISTING UTILITY LOCATIONS (SEE PLAN SHEET 23664-01-C183)
- EXISTING UTILITY LOCATIONS (SEE PLAN SHEET 23664-01-C184)
- EXISTING UTILITY LOCATIONS (SEE PLAN SHEET 23664-01-C185)
- EXISTING UTILITY LOCATIONS (SEE PLAN SHEET 23664-01-C186)
- EXISTING UTILITY LOCATIONS (SEE PLAN SHEET 23664-01-C187)
- EXISTING UTILITY LOCATIONS (SEE PLAN SHEET 23664-01-C188)
- EXISTING UTILITY LOCATIONS (SEE PLAN SHEET 23664-01-C189)
- EXISTING UTILITY LOCATIONS (SEE PLAN SHEET 23664-01-C190)
- EXISTING UTILITY LOCATIONS (SEE PLAN SHEET 23664-01-C191)
- EXISTING UTILITY LOCATIONS (SEE PLAN SHEET 23664-01-C192)
- EXISTING UTILITY LOCATIONS (SEE PLAN SHEET 23664-01-C193)
- EXISTING UTILITY LOCATIONS (SEE PLAN SHEET 23664-01-C194)
- EXISTING UTILITY LOCATIONS (SEE PLAN SHEET 23664-01-C195)
- EXISTING UTILITY LOCATIONS (SEE PLAN SHEET 23664-01-C196)
- EXISTING UTILITY LOCATIONS (SEE PLAN SHEET 23664-01-C197)
- EXISTING UTILITY LOCATIONS (SEE PLAN SHEET 23664-01-C198)
- EXISTING UTILITY LOCATIONS (SEE PLAN SHEET 23664-01-C199)
- EXISTING UTILITY LOCATIONS (SEE PLAN SHEET 23664-01-C200)

### KEY NOTES

1. CONTRACTOR TO VERIFY ALL UTILITY LOCATIONS SHOWN ON THESE PLANS BY FIELD SURVEY AND RECORD THE RESULTS OF THE SURVEY ON THESE PLANS.
2. CONTRACTOR TO VERIFY ALL UTILITY LOCATIONS SHOWN ON THESE PLANS BY FIELD SURVEY AND RECORD THE RESULTS OF THE SURVEY ON THESE PLANS.
3. CONTRACTOR TO VERIFY ALL UTILITY LOCATIONS SHOWN ON THESE PLANS BY FIELD SURVEY AND RECORD THE RESULTS OF THE SURVEY ON THESE PLANS.
4. CONTRACTOR TO VERIFY ALL UTILITY LOCATIONS SHOWN ON THESE PLANS BY FIELD SURVEY AND RECORD THE RESULTS OF THE SURVEY ON THESE PLANS.
5. CONTRACTOR TO VERIFY ALL UTILITY LOCATIONS SHOWN ON THESE PLANS BY FIELD SURVEY AND RECORD THE RESULTS OF THE SURVEY ON THESE PLANS.
6. CONTRACTOR TO VERIFY ALL UTILITY LOCATIONS SHOWN ON THESE PLANS BY FIELD SURVEY AND RECORD THE RESULTS OF THE SURVEY ON THESE PLANS.
7. CONTRACTOR TO VERIFY ALL UTILITY LOCATIONS SHOWN ON THESE PLANS BY FIELD SURVEY AND RECORD THE RESULTS OF THE SURVEY ON THESE PLANS.
8. CONTRACTOR TO VERIFY ALL UTILITY LOCATIONS SHOWN ON THESE PLANS BY FIELD SURVEY AND RECORD THE RESULTS OF THE SURVEY ON THESE PLANS.
9. CONTRACTOR TO VERIFY ALL UTILITY LOCATIONS SHOWN ON THESE PLANS BY FIELD SURVEY AND RECORD THE RESULTS OF THE SURVEY ON THESE PLANS.
10. CONTRACTOR TO VERIFY ALL UTILITY LOCATIONS SHOWN ON THESE PLANS BY FIELD SURVEY AND RECORD THE RESULTS OF THE SURVEY ON THESE PLANS.

### NOTES

1. ALL UTILITY WORK SHALL BE PERFORMED IN ACCORDANCE WITH THE REQUIREMENTS AND SPECIFICATIONS OF THE CITY OF HANFORD AND THE STATE OF CALIFORNIA.
2. CONTRACTOR TO VERIFY ALL UTILITY LOCATIONS SHOWN ON THESE PLANS BY FIELD SURVEY AND RECORD THE RESULTS OF THE SURVEY ON THESE PLANS.
3. CONTRACTOR TO VERIFY ALL UTILITY LOCATIONS SHOWN ON THESE PLANS BY FIELD SURVEY AND RECORD THE RESULTS OF THE SURVEY ON THESE PLANS.
4. CONTRACTOR TO VERIFY ALL UTILITY LOCATIONS SHOWN ON THESE PLANS BY FIELD SURVEY AND RECORD THE RESULTS OF THE SURVEY ON THESE PLANS.
5. CONTRACTOR TO VERIFY ALL UTILITY LOCATIONS SHOWN ON THESE PLANS BY FIELD SURVEY AND RECORD THE RESULTS OF THE SURVEY ON THESE PLANS.
6. CONTRACTOR TO VERIFY ALL UTILITY LOCATIONS SHOWN ON THESE PLANS BY FIELD SURVEY AND RECORD THE RESULTS OF THE SURVEY ON THESE PLANS.
7. CONTRACTOR TO VERIFY ALL UTILITY LOCATIONS SHOWN ON THESE PLANS BY FIELD SURVEY AND RECORD THE RESULTS OF THE SURVEY ON THESE PLANS.
8. CONTRACTOR TO VERIFY ALL UTILITY LOCATIONS SHOWN ON THESE PLANS BY FIELD SURVEY AND RECORD THE RESULTS OF THE SURVEY ON THESE PLANS.
9. CONTRACTOR TO VERIFY ALL UTILITY LOCATIONS SHOWN ON THESE PLANS BY FIELD SURVEY AND RECORD THE RESULTS OF THE SURVEY ON THESE PLANS.
10. CONTRACTOR TO VERIFY ALL UTILITY LOCATIONS SHOWN ON THESE PLANS BY FIELD SURVEY AND RECORD THE RESULTS OF THE SURVEY ON THESE PLANS.

### ABBREVIATIONS

CD	CATCH BASIN
DC	DEVELOPING CURB
DE	DEVELOPING DRAINAGE
FE	EXISTING UTILITY
FW	EXISTING UTILITY
GP	PROPOSED GROUND PROFILE
PP	PROPOSED UTILITY
PPV	PROPOSED UTILITY
F.S.C.	FIELD SURVEY CORRECTION
S.D.	STATION DATA
S.D.L.	STATION DATA
S.L.	STATION DATA
ST	STATION DATA

### CONSTRUCTION DOCUMENTS

DATE	02/28/2022
REVISION	
ISSUED BY	R. L. JONES
CHECKED BY	R. L. JONES
APPROVED BY	R. L. JONES
DATE	02/28/2022
PROJECT NUMBER	23664-01
SCALE	AS SHOWN BY ARCHITECT'S DRAWINGS
DRAWN BY	R. L. JONES
CHECKED BY	R. L. JONES
APPROVED BY	R. L. JONES
DATE	02/28/2022



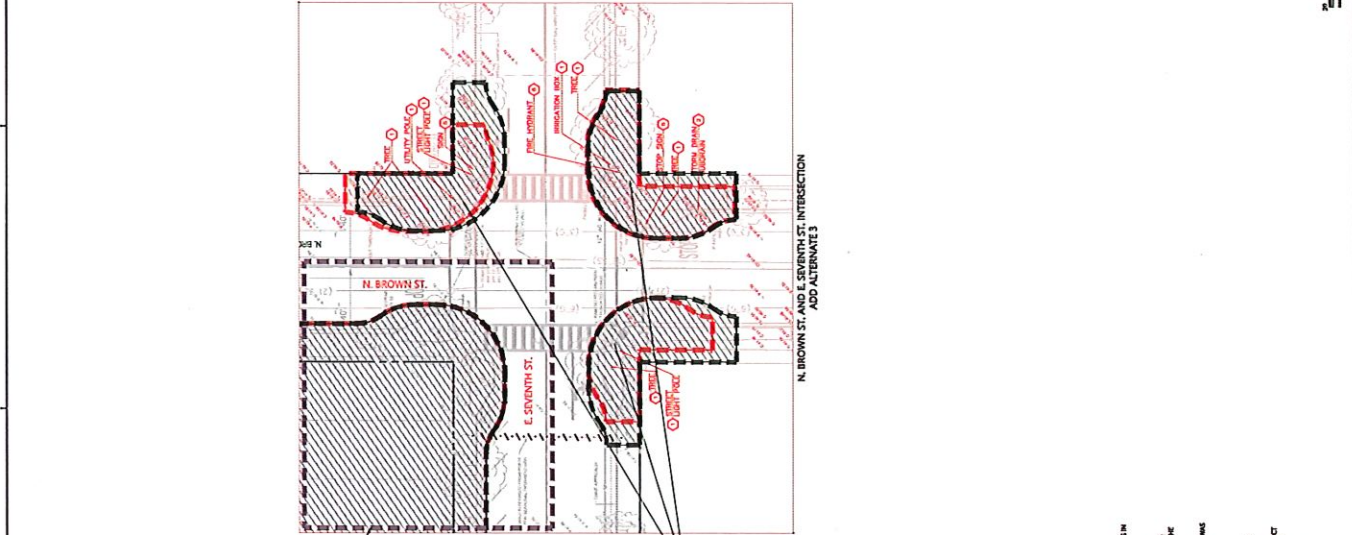


DATE	DESCRIPTION
01/20/24	ISSUED FOR PERMIT
02/27/24	REVISION
03/15/24	REVISION

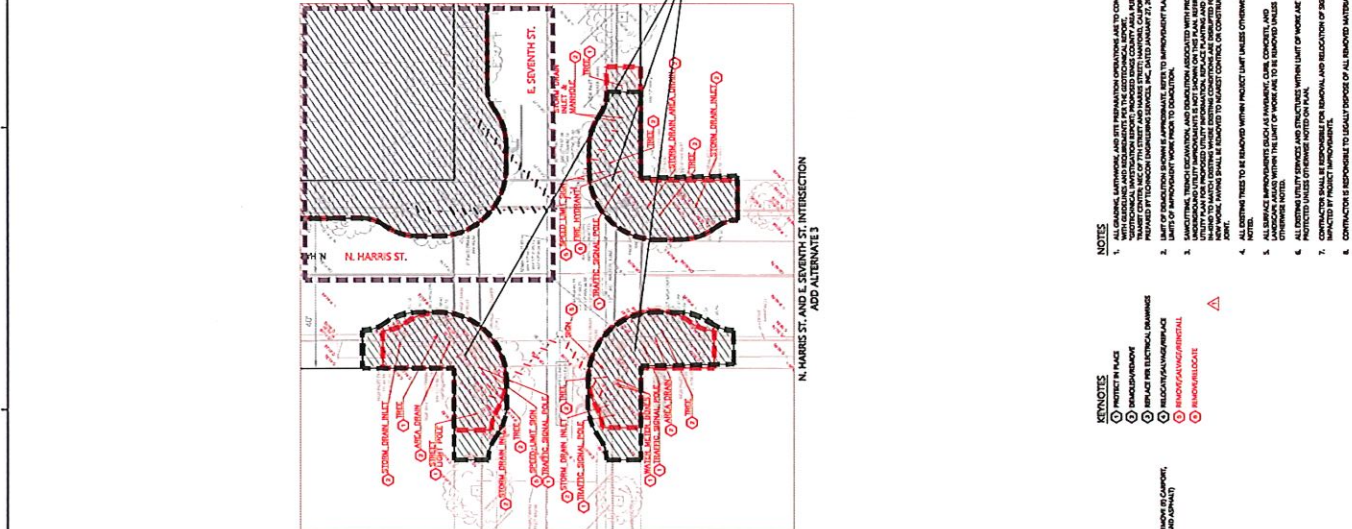
  

PROJECT NUMBER	2366-01-C21
PROJECT NAME	KINGS COUNTY AREA REGIONAL TRANSIT FACILITY
PROJECT ADDRESS	200 E 7TH STREET, HANFORD, CA 93230
PROJECT NUMBER	2366-01-C21

**CONSTRUCTION DOCUMENTS**      **CONFORMING SET**



THREE (3) NEW BULBOUTS AND INTERSECTION IMPROVEMENTS ARE CURRENTLY AWAITING PLANS FROM THE CITY.



SEE SHEET C2.00 FOR BASE BID IMPROVEMENTS



- LEGEND**
- DEMOLITION LIMIT
  - PROTECT IN PLACE
  - DRAINAGE/REPAIR
  - RECONSTRUCTION/REPAIR
  - REMOVAL/DEMOLITION
  - ENLIGHTEN BUILDING
- 
- KEYNOTES**
- PROTECT IN PLACE
  - DRAINAGE/REPAIR
  - RECONSTRUCTION/REPAIR
  - REMOVAL/DEMOLITION
  - ENLIGHTEN BUILDING

- NOTES**
1. CONTRACTOR SHALL VERIFY ALL UTILITIES ARE DELETED AND CORRECTED TO COMPLY WITH ALL LOCAL AND STATE REGULATIONS FOR THE ENVIRONMENTAL PROTECTION AGENCY (EPA) UNDER THE FEDERAL CLEAN WATER ACT. ALL UTILITIES SHALL BE PROTECTED BY THE CONTRACTOR THROUGHOUT THE CONSTRUCTION PERIOD.
  2. CONTRACTOR SHALL VERIFY ALL UTILITIES ARE DELETED AND CORRECTED TO COMPLY WITH ALL LOCAL AND STATE REGULATIONS FOR THE ENVIRONMENTAL PROTECTION AGENCY (EPA) UNDER THE FEDERAL CLEAN WATER ACT. ALL UTILITIES SHALL BE PROTECTED BY THE CONTRACTOR THROUGHOUT THE CONSTRUCTION PERIOD.
  3. CONTRACTOR SHALL VERIFY ALL UTILITIES ARE DELETED AND CORRECTED TO COMPLY WITH ALL LOCAL AND STATE REGULATIONS FOR THE ENVIRONMENTAL PROTECTION AGENCY (EPA) UNDER THE FEDERAL CLEAN WATER ACT. ALL UTILITIES SHALL BE PROTECTED BY THE CONTRACTOR THROUGHOUT THE CONSTRUCTION PERIOD.
  4. CONTRACTOR SHALL VERIFY ALL UTILITIES ARE DELETED AND CORRECTED TO COMPLY WITH ALL LOCAL AND STATE REGULATIONS FOR THE ENVIRONMENTAL PROTECTION AGENCY (EPA) UNDER THE FEDERAL CLEAN WATER ACT. ALL UTILITIES SHALL BE PROTECTED BY THE CONTRACTOR THROUGHOUT THE CONSTRUCTION PERIOD.

- CONTRACTOR RESPONSIBILITIES**
1. CONTRACTOR SHALL VERIFY ALL UTILITIES ARE DELETED AND CORRECTED TO COMPLY WITH ALL LOCAL AND STATE REGULATIONS FOR THE ENVIRONMENTAL PROTECTION AGENCY (EPA) UNDER THE FEDERAL CLEAN WATER ACT. ALL UTILITIES SHALL BE PROTECTED BY THE CONTRACTOR THROUGHOUT THE CONSTRUCTION PERIOD.
  2. CONTRACTOR SHALL VERIFY ALL UTILITIES ARE DELETED AND CORRECTED TO COMPLY WITH ALL LOCAL AND STATE REGULATIONS FOR THE ENVIRONMENTAL PROTECTION AGENCY (EPA) UNDER THE FEDERAL CLEAN WATER ACT. ALL UTILITIES SHALL BE PROTECTED BY THE CONTRACTOR THROUGHOUT THE CONSTRUCTION PERIOD.
  3. CONTRACTOR SHALL VERIFY ALL UTILITIES ARE DELETED AND CORRECTED TO COMPLY WITH ALL LOCAL AND STATE REGULATIONS FOR THE ENVIRONMENTAL PROTECTION AGENCY (EPA) UNDER THE FEDERAL CLEAN WATER ACT. ALL UTILITIES SHALL BE PROTECTED BY THE CONTRACTOR THROUGHOUT THE CONSTRUCTION PERIOD.
  4. CONTRACTOR SHALL VERIFY ALL UTILITIES ARE DELETED AND CORRECTED TO COMPLY WITH ALL LOCAL AND STATE REGULATIONS FOR THE ENVIRONMENTAL PROTECTION AGENCY (EPA) UNDER THE FEDERAL CLEAN WATER ACT. ALL UTILITIES SHALL BE PROTECTED BY THE CONTRACTOR THROUGHOUT THE CONSTRUCTION PERIOD.
  5. CONTRACTOR SHALL VERIFY ALL UTILITIES ARE DELETED AND CORRECTED TO COMPLY WITH ALL LOCAL AND STATE REGULATIONS FOR THE ENVIRONMENTAL PROTECTION AGENCY (EPA) UNDER THE FEDERAL CLEAN WATER ACT. ALL UTILITIES SHALL BE PROTECTED BY THE CONTRACTOR THROUGHOUT THE CONSTRUCTION PERIOD.
  6. CONTRACTOR SHALL VERIFY ALL UTILITIES ARE DELETED AND CORRECTED TO COMPLY WITH ALL LOCAL AND STATE REGULATIONS FOR THE ENVIRONMENTAL PROTECTION AGENCY (EPA) UNDER THE FEDERAL CLEAN WATER ACT. ALL UTILITIES SHALL BE PROTECTED BY THE CONTRACTOR THROUGHOUT THE CONSTRUCTION PERIOD.
  7. CONTRACTOR SHALL VERIFY ALL UTILITIES ARE DELETED AND CORRECTED TO COMPLY WITH ALL LOCAL AND STATE REGULATIONS FOR THE ENVIRONMENTAL PROTECTION AGENCY (EPA) UNDER THE FEDERAL CLEAN WATER ACT. ALL UTILITIES SHALL BE PROTECTED BY THE CONTRACTOR THROUGHOUT THE CONSTRUCTION PERIOD.
  8. CONTRACTOR SHALL VERIFY ALL UTILITIES ARE DELETED AND CORRECTED TO COMPLY WITH ALL LOCAL AND STATE REGULATIONS FOR THE ENVIRONMENTAL PROTECTION AGENCY (EPA) UNDER THE FEDERAL CLEAN WATER ACT. ALL UTILITIES SHALL BE PROTECTED BY THE CONTRACTOR THROUGHOUT THE CONSTRUCTION PERIOD.
  9. CONTRACTOR SHALL VERIFY ALL UTILITIES ARE DELETED AND CORRECTED TO COMPLY WITH ALL LOCAL AND STATE REGULATIONS FOR THE ENVIRONMENTAL PROTECTION AGENCY (EPA) UNDER THE FEDERAL CLEAN WATER ACT. ALL UTILITIES SHALL BE PROTECTED BY THE CONTRACTOR THROUGHOUT THE CONSTRUCTION PERIOD.
  10. CONTRACTOR SHALL VERIFY ALL UTILITIES ARE DELETED AND CORRECTED TO COMPLY WITH ALL LOCAL AND STATE REGULATIONS FOR THE ENVIRONMENTAL PROTECTION AGENCY (EPA) UNDER THE FEDERAL CLEAN WATER ACT. ALL UTILITIES SHALL BE PROTECTED BY THE CONTRACTOR THROUGHOUT THE CONSTRUCTION PERIOD.

**From:** Chris Hale <[chris@cmconstructionservices.com](mailto:chris@cmconstructionservices.com)>  
**Sent:** Thursday, December 21, 2023 12:44 PM  
**To:** Joe Bogart <[jbogart@quiring.com](mailto:jbogart@quiring.com)>  
**Subject:** FW: KART-ASI-001 Conforming Set

[EXTERNAL EMAIL] This email originated outside of the Quiring General organization. Do not click links or open attachments unless you recognize the sender and know the content is safe.

Joe

I have attached Charles' ASI with the changes to specs and plans.  
He has issued a complete conformance set.

I have not issued this to any others on your team.

I am shutting down the office today and I will be on vacation next week.  
I will be around tomorrow and I am going to check the plans and I will be close to my computer and phone.

I will be back in town Wednesday and so not entirely on vacation and I will continue to process documents.  
Call if you want or email me.

Dave will still be visiting the site.

Respectfully,

Chris Hale  
*Project Manager*



P.O. BOX 6237, Visalia, CA 93290  
P: (559) 735-9556 Cell: (559) 804-6685  
F: (559) 735-9529  
CA License #821243

This electronic message transmission contains information from the Firm CM Construction Services which may be confidential or privileged.

The information is intended to be for the use of the individual or entity named above.

If you are not the intended recipient, be aware that any disclosure, copying or distribution or use of the contents of this information is prohibited.



If you have received this electronic transmission in error, please notify us by telephone (559-735-9556) or by electronic mail immediately. Thank you

**From:** Charles Dellinger <[cadellinger@rrmdesign.com](mailto:cadellinger@rrmdesign.com)>  
**Sent:** Thursday, December 21, 2023 12:17 PM  
**To:** Chris Hale <[chris@cmconstructionservices.com](mailto:chris@cmconstructionservices.com)>; Dave Collinwood <[dave@cmconstructionservices.com](mailto:dave@cmconstructionservices.com)>  
**Cc:** Kara Davis <[kldavis@rrmdesign.com](mailto:kldavis@rrmdesign.com)>; Kim Martinez <[kamartinez@rrmdesign.com](mailto:kamartinez@rrmdesign.com)>; Alex Martinez <[amartinez@rrmdesign.com](mailto:amartinez@rrmdesign.com)>; Michael Scott <[MLScott@rrmdesign.com](mailto:MLScott@rrmdesign.com)>  
**Subject:** KART-ASI-001 Conforming Set

Chris,

Below is the link to ASI-001 for the Conforming Plans and Specifications. This is incorporates in the documents everything that was clarified during the addenda process and with the public works review. Please let us know if you have any questions. I'll work on getting the cities documents aligned as well.

 [ASI-001 Conforming Documents](#)

Best,



**CHARLES DELLINGER**  
Senior Project Manager  
3765 S. Higuera Suite 102  
San Luis Obispo, CA 93401  
(805) 543-1794  
(805) 458-9480 mobile  
[rrmdesign.com](http://rrmdesign.com)

